

CITIZEN

Micro HumanTech

Great performance - Small price Naturally Citizen



Environmentally friendly

From production and packaging to utilisation and recycling the CT-S310II fulfills today's demand for green IT products. The integrated Energy Star® power supply is one of the most efficient at managing power consumption.

Dual Interface

With an USB and serial interface on board the CT-S310II is a future-proof investment.



Tool-free maintenance

Paper jam? No problem. The printer comes with the same intelligent service features as Citizen's high end printers.

Long Life Print

The new LLP function can extend the print head life to 200km or more

CITIZEN CT-S310II

POS

Applications

- Receipt
- Coupon
- Ticket
- Daily report
- Kitchen
- Delivery slip
- Barcode
- Weigh scales
- Kiosk



Easy Maintenance for Cutter, Print Head and Platen

CITIZEN

Micro HumanTech

Specifications

Printing method	Line thermal dot printing
Printing width	80mm paper: 72mm/576 dots 58mm paper: 48mm/384 dots
Dot pitch	8 x 8 dots/mm (203 dpi x 203 dpi)
Printing speed	Max. 160mm/sec.
Number of columns	80mm paper: Font A-48 columns, Font B-64 columns, Font C-72 columns 58mm paper: Font A: 35/32columns, Font B 46/42 columns, Font C: 52/48 columns
Character size	Font A: 1.50 x 3.00mm (12 x 24 dots) Font B: 1.13 x 3.00mm (9 x 24 dots) Font C: 1.00 x 2.00mm (8 x 16 dots)
Character table	Code page 437, 850, 852,8 57, 858, 860, 863, 864, 865, 866, Katakana, WPC1252 , Thai code 18
Barcode type	UPC-A/E, JAN-13/8, ITF, Code 39, Code 128, CODABAR,Code 93, GS1 Databar, PDF417, QR Code
Line spacing	4.25mm (1/6 inch); adjustable by user by comand
Paper	Thermal paper roll, 80 or 58mm (W)x Ø83mm
Interface	USB Full Speed & Serial (RS-232C) build in
Input buffer	4K bytes / 45 bytes
NV user memory	User area for character 192Kbyte, User area for graphic 384KByte
Drawer kick-out	2 Drawers
Power	Input: AC100 - AC240 V, 47/63Hz, Engery Star approved
Power consumption	Printing 40 W, Sleep 0,7 W, Standby 0,15 W
Weight	1,9 kg
Dimension (W x D x H)	140 x 195 x 132 mm
Operating environment	5-45°C, 10-90% RH
Storage environment	-20-60°C, 10-90% RH
Reliability	Thermal head: 300.000.000 pulses or 150km (200km or more with LLP (Long Life Print) Function) Auto cutter: 2.000.000 cuts
EHC and safety standard	UL, C-UL, FCC Class A, TUV-GS, CE marking, VCCI

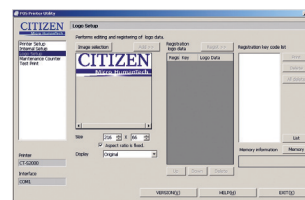
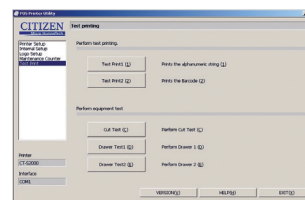
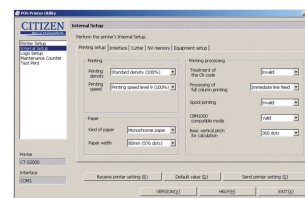
Type Classification

CT-S310II E BK

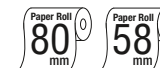
1) 2) 3)

1) Model type CT-S310II
2) Character set U: USA
E: Europe
3) Body case color WH: Cool white
BK: Black

POS-Printer Utility



Features



- 160mm/sec. high-speed printing
- 80/58mm selectable paper width
- Compact design
- Easy paper loading
- Fast and quiet Cutter (full/partial)
- Easy Maintenance for Cutter, Print Head and Platen
- LLP (Long Life Print) function for extending the print head life
- USB and serial interface as built-in interface
- Built-in Engery Star® power supply
- Low power consumption: Power Save Mode / USB Power Save Mode
- Paper save function: Top Margin / Line spacing / Font Compression
- Cash drawer kick-out
- Bitmap data registration (NV memory)
- Barcode printing including GS1 DataBar and 2D barcode
- ESC/POS compatibility
- Page mode
- Easy customization by Utility Software
- Available in white or black
- All-in-one package
- Driver: Windows2000/XP/Vista/7 32 bit/64 bit/OPOS/JavaPOS/POS for .NET/CUPS